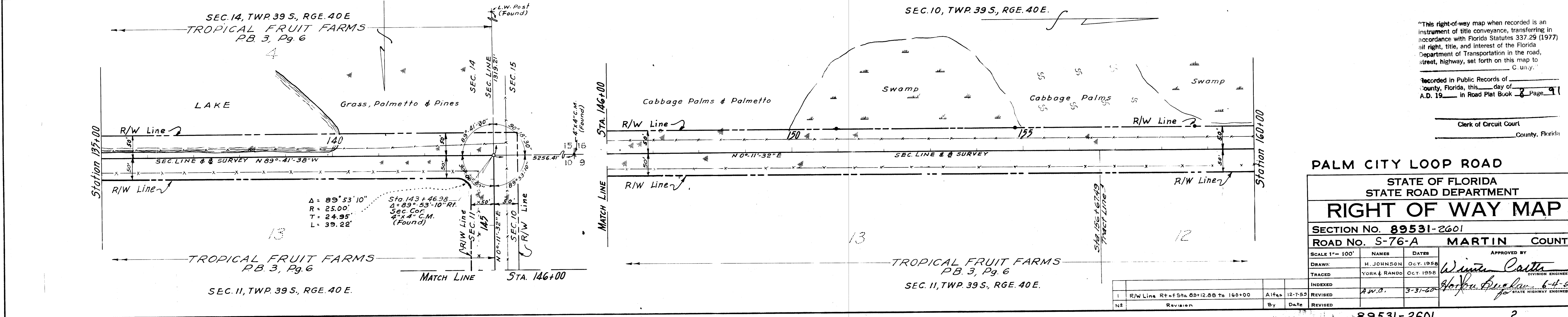
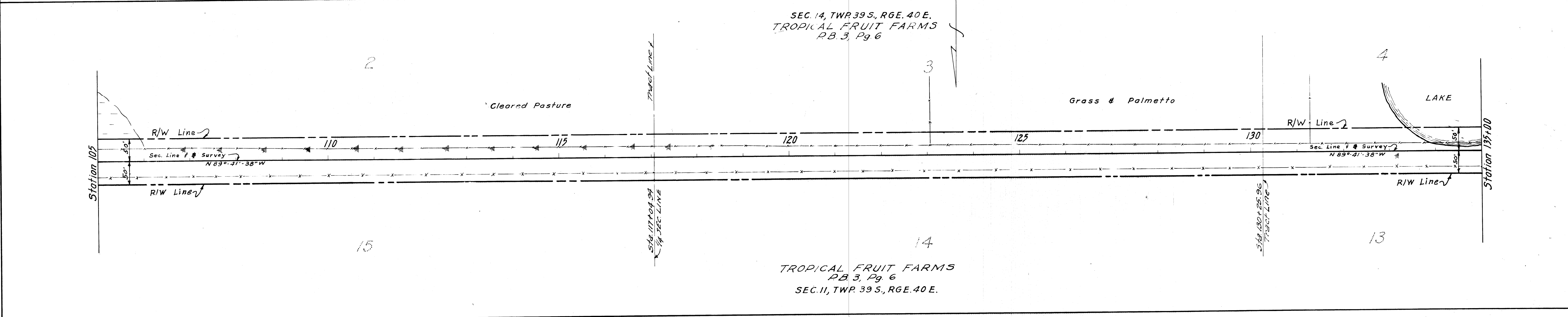
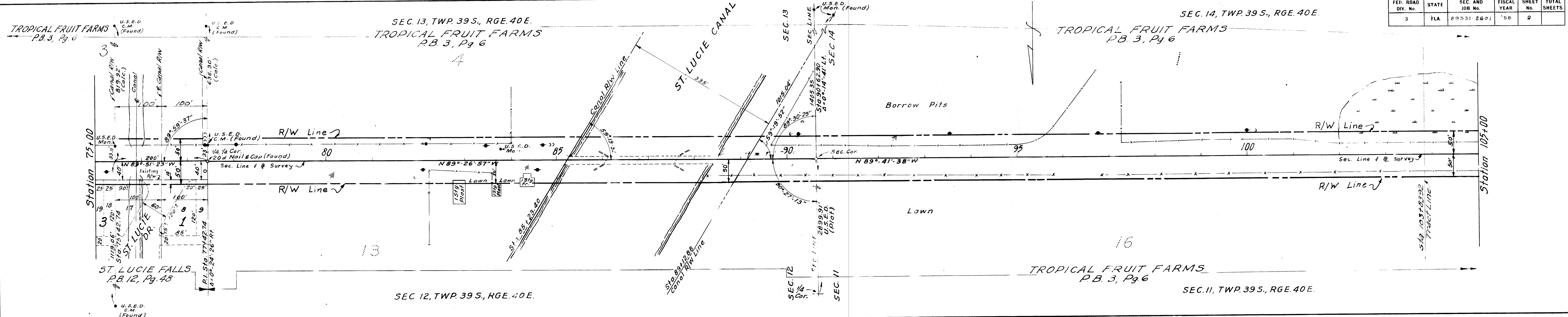


FED. ROAD DIV. No.	STATE	SEC. AND JOB No.	FISCAL YEAR	SHEET No.	TOTAL SHEETS
3	FLA.	89531-2601	'58	2	



"This right-of-way map when recorded is an instrument of title conveyance, transferring in accordance with Florida Statutes 337.29 (1977) all right, title, and interest of the Florida Department of Transportation in the road, street, highway, set forth on this map to the City of Palm Bay, Florida."

Recorded in Public Records of _____ County, Florida, this _____ day of _____ A.D. 19____ in Road Plat Book _____ Page _____

Clerk of Circuit Court _____ County, Florida

PALM CITY LOOP ROAD
 STATE OF FLORIDA
 STATE ROAD DEPARTMENT
RIGHT OF WAY MAP

SECTION No. 89531-2601		ROAD No. S-76-A		MARTIN COUNTY	
SCALE 1" = 100'	NAMES	DATES	APPROVED BY		
DRAWN	H. JOHNSON	OCT. 1958	Winters Carter		
TRACED	YORK & RANDO	OCT. 1958	DIVISION ENGINEER		
INDEXED	A.W.D.	3-31-60	6-4-57		
REVISION	By	Date	REVISOR		
1	R/W Line Rt of Sta. 68+12.88 to 160+00	Alfa	12-7-59		
2					